



# ATHENÆUM OF PHILADELPHIA



## 195<sup>TH</sup> ANNUAL REPORT



# THE ATHENÆUM OF PHILADELPHIA

## 195<sup>TH</sup> ANNUAL REPORT

### FISCAL YEAR 2009/2010



© 2011 The Athenæum of Philadelphia

Published by The Athenæum of Philadelphia  
219 S. 6th St., Philadelphia, PA 19106-3794  
P: 215-925-2688, F: 215-925-3755  
[www.PhilaAthenaeum.org](http://www.PhilaAthenaeum.org)

**Front Cover:** Details from an advertising brochure for Wynnewood Manor houses. Walter Bassett Smith, Architect, 1910. Gift of Hyman Myers, FAIA, and Sandra K. Myers.

**Rear Cover:** Exhibition posters from fiscal year 2009/2010.

# THE ATHENÆUM OF PHILADELPHIA

## 2009/2010

### BOARD OF DIRECTORS

Lea Carson (Mrs. Henry) Sherk, President

Robert E. Linck, Vice-President

William M. Davison, 4th, Treasurer

Sandra L. Tatman, Ph.D., Secretary

Joanne R. Denworth, Esq.

Gay P. Gervin

Francis R. Grebe

John D. Milner, FAIA

Hyman Myers, FAIA

Shaun F. O'Malley

Satoko I. Parker, Ph.D.

Hugh A. A. Sargent, Esq.

Charles C. Savage

Charles Snelling

Marjorie P. Snelling

Maria M. Thompson

John C. Tuten, Jr., Esq.

Christina T. Webber

### Directors Emeritus

Nicholas Biddle, Jr.

James F. O'Gorman

### STAFF

Sandra L. Tatman, Ph.D., Executive Director

Jim Carroll, Imaging Specialist, Regional Digital Imaging Center

Denise Fox, Conservation Specialist

Susan Gallo, Receptionist

Dolores Garadetsky, Membership Secretary

Bruce Laverty, Gladys Brooks Curator of Architecture

Jill LeMin Lee, Circulation Librarian

Eileen M. Magee, Assistant Director for Programs

Lois Reibach, Bibliographer

Michael Seneca, Director, Regional Digital Imaging Center

Louis Vassallo, Building Supervisor

### Emeritus

Dr. Roger W. Moss, Executive Director Emeritus

*The mission of the Athenaeum of Philadelphia is to provide library and museum services to its members, community and scholars throughout the world and to be a diligent steward of its National Historic Landmark building and its collections of books, manuscripts, architectural drawings, photographs and historic objects.*

## FROM THE PRESIDENT OF THE BOARD

Lea Carson Sherk

The Athenaeum Board of Directors revisits its policy decisions annually, as the recent (April 2010) revision of its mission statement (above) and strategic plan, indicates. The former plan, although only in place for 18 months, did not adequately reflect the Athenæum's mission as a museum, serving as it does, as a repository and custodian not only for books, photos and architectural records, but also for manuscripts and historic objects.

It is an important Board function to make adjustments in matters of policy, not only to better serve our members and the public, but also to present a clear picture of our functions and goals to present to potential donors and granting institutions. The mission statement succinctly presents the tenets of The Athenaeum of Philadelphia to the public and very likely is the first written material that donors look at when a gift or grant is being considered.

In addition to the more theoretical aspects of Board activity, several other actions have been taken to improve its function, including the establishment of the Governance Committee, chaired by Shaun F. O'Malley, which has replaced the Nominating Committee. Serving on the committee are Marjorie P. Snelling, Maria Thompson and myself, ex-officio. The committee's functions include nominating new Board members and spearheading Board assessments.

A new member of the Athenaeum's Board is Marjorie P. Snelling, who fills her father's seat. Charles Snelling served on the Board from 2002 to 2010.

Marjorie Snelling holds a degree in Economics from the University of Pennsylvania and is a financial advisor with Lincoln Financial Advisors. Previous board experience includes serving as vice-president of the board for the Atwater Kent Museum and as president of the board for St. Peter's School. Please welcome Marjorie to the Board when you meet her.

In the coming year, my report will very likely include increased activity from the Development Committee as your Board addresses the issue of funding the ongoing needs of our historic (and beautiful) building.



Above: Marjorie and Charles Snelling.

# REPORT OF THE EXECUTIVE DIRECTOR

Dr. Sandra L. Tatman

Again I must report a year of challenges, with repair of the south wall of the Athenaeum topmost on the list. Beginning in fall 2009 and continuing into spring 2010 south party wall repairs were designed by Keast & Hood, engineers, with actual construction undertaken by J. S. Cornell & Son, Inc. For a few weeks in the spring the Busch Room was unavailable while the floor was open for these repairs. Accomplishing this major project would not have been possible without a generous donation from Board member Charles C. Savage, but even with that donation you will see that our annual budget felt a drastic bite. Nonetheless, this was an important repair that could not be delayed, and we are proud to announce its completion.



Above: Busch Room floor during south wall repairs.

Through the work that was necessary to stabilize the south wall, Athenaeum programs and exhibitions continued. The fall 2009 lecture series launched with Maggie Lidz and her very popular *The Du Ponts: Houses and Gardens in the Brandywine, 1900-51*, which we co-sponsored with the Institute of Classical Architecture and Classical America. This was followed by a co-sponsored event with the American Philosophical Society, Andro Linklater and his *An Artist in Treason: The Extraordinary Double Life of General James Wilkinson*. October brought Athenaeum member Nancy M. Heinzen and *The Perfect Square: A History of Rittenhouse Square*, and November saw Michael G. Trachtman illuminating the government of the United States with his *The Supremes' Greatest Hits: The 37 Supreme Court Cases that Most Directly Affect your Life*. Also in November University of Pennsylvania Professor Joan DeJean came with *The Age of Comfort: When Paris Discovered the Casual*, a co-sponsored program with the Alliance Francaise. At the beginning of December the Athenaeum hosted part of the celebration directed by the Historic St. Peter's Church Preservation Corporation, with William Pencak's "Our Bishop: The Forgotten Founding Father." We rounded out the fall 2009 programs with Toby Lester and *The Fourth Part of the World: The Race to the Ends of the Earth and the Epic Story of the Map That Gave American Its Name*, yet another co-sponsored program, this time with the Geographical Society.

In winter/spring the pace of programs did not subside as we began the season with Thomas Fleming's return with *The Intimate Lives of the Founding Fathers*.



Above: "Literary May" schedule with 1929 illustration of the Members' Reading Room by Thornton Oakley.

Steven W. Semes followed with his polemic on historic preservation *The Future of the Past*, and at the Annual Meeting Athenaeum member David De Long delighted the crowd with his report on *Sunnylands: Art and Architecture of the Annenberg Estate in Rancho Mirage, California*.

"Literary May" brought a host of programs and the semi-annual book sale to the Athenaeum. Many Athenaeum members volunteered for the book sale, marking prices on the books, sorting book collections into categories, and also selling books during the sale. Although the list is too long to mention every one of you, I want you to know how much we appreciate all of the help. The money raised from the book sale benefited the repairs and maintenance of the Athenaeum building, a continuing concern for all.

In 2010 the Literary Award went to Dr. Richard Beeman for *Plain, Honest Men: The Making of the American Constitution*. Other events during Literary May included "Crime Does Pay," where local authors William Lashner, Merry Jones, George Anastasia, Gerald Kolpan, Jonathan Levitan, and moderator Cordelia Frances Biddle offered a lively discussion of the art of mystery and suspense writing. During May 2010 Saturnalia Books also joined us for a poetry



Above: The Athenaeum book sale.

reading from their authors, a spring program which we hope will become a tradition as part of Literary May; and Ejner Jensen, Professor Emeritus of the University of Michigan, offered a workshop on "Shakespeare's Comic Practice," exploring elements of Shakespearean comedy on a number of levels ranging from the design of entire plays, to the development of scenes, to the creation of characters. In June we returned in our lecture program to the theme of Shakespeare with Jennifer Lee Carrell's second Shakespearean mystery *Haunt Me Still*.

Our exhibition schedule for the 2009/2010 season was equally full, with September beginning with the very popular "Jacob Stelman, Architectural Photography, 1936-1970" calling forth hosts of memories for longtime Philadelphians. One highlight of the show was the Ellis Coffee Company photograph showing the office in Center City, with its steaming coffeepot. The Ellis Company also generously contributed to the costs of the exhibition. After Jacob Stelman came "Trading Up: Some Surprising Samples from the Athenaeum's Building Trade Collection," and featuring Mr. Hytex, the Hydraulic Pressed Brick Company's symbol of safety. Throughout the beginning of the 2009/2010 season the curatorial staff was working on a book arts competition the Athenaeum co-sponsored with the Philadelphia Center for the Book, which culminated in "Building by the Book: Book Artists Respond to Architecture and Design." Six artists were chosen from the 24 who entered the competition from all across the country, and their final book designs were shown in the Haas Gallery along with the architectural patternbooks and trade catalogs



**Above: Bruce Laverty gives a gallery talk for the Jacob Stelman exhibition.**

which inspired them. This very successful gallery exhibition was timed to coincide with the city-wide celebration of print “Philagrafika,” and our competition and exhibition were funded by a generous grant from the Beneficia Foundation. Opening in May, and originally created by and for the Department of Interior Museum, “American Place: The Historic American Buildings Survey at Seventy-Five Years,” an exhibition of measured drawings and photographs celebrated the diamond jubilee of one of the most successful and long-lasting WPA programs of the New Deal. The Athenaeum is a particularly appropriate venue for the exhibition given that our late member Charles E. Peterson, FAIA, was founder of the HABS program, and the Athenaeum administers both the Peterson Prize and Fellowship. Photographs, architectural drawings, and designed books – all of these reflect the interests of the Athenaeum collections, and all require the services of our scanning operation and small gallery team of Bruce Laverty, Michael Seneca, Jim Carroll, and Denise Fox.

On June 6th, 2010, a date when a tornado warning prediction was issued, the Athenaeum conducted a walking tour of Rittenhouse Square, designed by curator Bruce Laverty and our Board member Dr. Satoko I. Parker. We began at the Curtis Institute and finished the afternoon with a reception and dinner at the Orpheus Club, where we were entertained by The Interchangeables who offered a wonderful rendition of Beach Boys favorites, among others. For this wonderful tour several members opened their own homes or facilitated our gaining entry to historic properties, and we also had a number

of member volunteers who acted as leaders or “sweepers” for the individual groups. Our thanks to all of you who participated! This was a fundraiser for our building, and we truly appreciate both the volunteer help and the donations of the participants in this timely effort.

We remain fortunate in our relationships with local colleges and universities and continue to gain free work study employees through Temple University, graduate student assistants from the University of the Arts, and Peterson Fellows from several local colleges. I also want to mention here several of our most faithful volunteers who help with collections and with keeping the Athenaeum open on First Saturdays. Both Mary Ellen Weber and John Fatula volunteer with us to help keep order in the objects that we own and to conserve both books and other paper-based items in our collections. Bernie Resnick, Margaret Ullman, and Judy Brookover have helped us on Saturdays to keep the building open for both members and the public.



**Above: Volunteer John Fatula.**

Last year I quoted liberally from one of several relevant passages from the days of Athenaeum Librarian Arthur Kennedy (librarian from 1938 to 1955) who called for a stalwart response to the “bewildering changes” that the Athenaeum experienced during his tenure. I am happy to report that the Athenaeum has come through the latest change with a healthy report and with plans to meet the continuing challenges of our National Landmark Building. Of course, we rely upon the strength of our Board and members to help meet those challenges, and we thank our supporters over the past years who have made such a difference to us in the work already accomplished on the building.

# RESEARCH COLLECTIONS

Bruce Laverty, Gladys Brooks Curator of Architecture

Items in a wide range of collecting areas have been acquired by the Athenaeum for the Research Collection in the past year. Some of the highlights are enumerated below.

## Architectural Drawings

The single largest drawing acquired was a framed triptych rendering of the George Washington Masonic National Memorial in Alexandria, Virginia, designed in 1920 by architects, Helme and Corbett. The brooding night rendering was done by Hugh Ferriss. Fans of National Treasure and Dan Brown novels will no doubt note the mathematical relationship between the

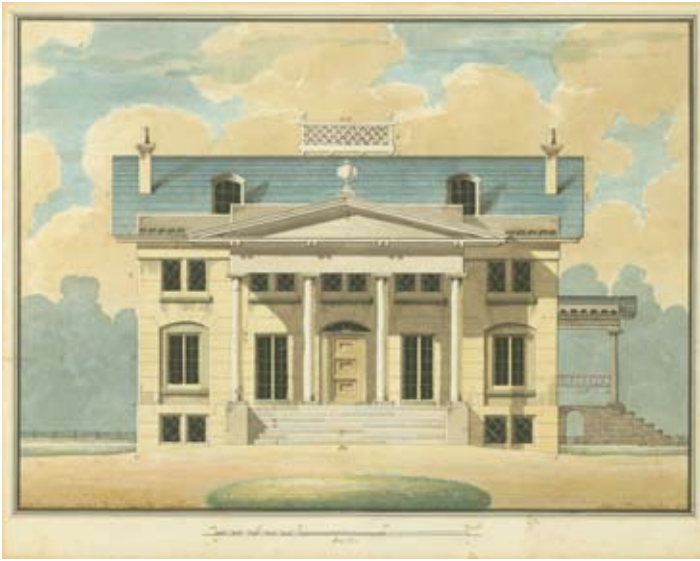
Masonic Memorial, and the Washington Monument and the Capitol Building across the Potomac in the distance. This enormous piece was the gift of Hyman and Sandra Myers.

An “Unfinished Sketch for a Country Residence” was purchased with funds from the Architectural Acquisitions Fund. This rare architectural drawing is by John C. Trautwine, a student of Thomas Ustick Walter’s. Trautwine attempted a career at architecture, in the 1830s but became best known as the civil engineer who, in 1850, first surveyed the Isthmus of Panama for a trans-oceanic canal.



Above: “Memorial To Washington The Mason.” Hugh Ferriss, 1920. Gift of Hyman Myers, FAIA, and Sandra K. Myers.





Above: "Unfinished Sketch for a Country Residence." John Trautwine, Architect, n.d.

The Athenaeum expanded its collection of drawings for "mobile architecture" with a group of colorful gouache renderings for the interior of luxury stream-lined train cars built in Philadelphia by the Edward G. Budd Company. These renderings, executed in 1947, were by John Harbeson, protégé of architect Paul Philippe Cret and were the gift of Thomas P. Piotrowski, partner in Cret's successor firm, H2L2.

### Photographs

Last summer the *Philadelphia Inquirer* published an item on the growing interest in stereoscopic views and mentioned the Athenaeum



Above: Budd Train Car, "Coffee Shop Lounge." Harbeson, Hough, Livingston & Larson, Architects, c. 1948-1955. Gift of Thomas P. Piotrowski.

as one of the few Philadelphia repositories that has a collection of the double-image photos as well as the machinery for properly viewing them. Our collection was bolstered in 2009 by the generosity of Diane Maleski who donated 54 late-nineteenth century stereo views to the Athenaeum. Most of these were travel images that were used for self-educational purposes, but a few served as Victorian morality tales, such as the one here warning of the dangers of gossip.



Above: Stereoview. "Gossip-At Every Sip a Reputation Dies." Strohmeyer & Wyman, 1897. Gift of Diane Maleski.

### Maps

Throughout 2009 and 2010 the Athenaeum's Regional Digital Imaging Center has been scanning maps from the Fairmount Park Archives and posting them on the Greater Philadelphia Geohistory Network. In the meantime our own cartographic holdings have been growing. In 2010 Athenaeum President, Lea Carson Sherk donated two late 1940s blueline maps of Fairmount Park that show the proposed route of the Schuylkill Expressway and its ultimate impact on the park.

### Trade Materials

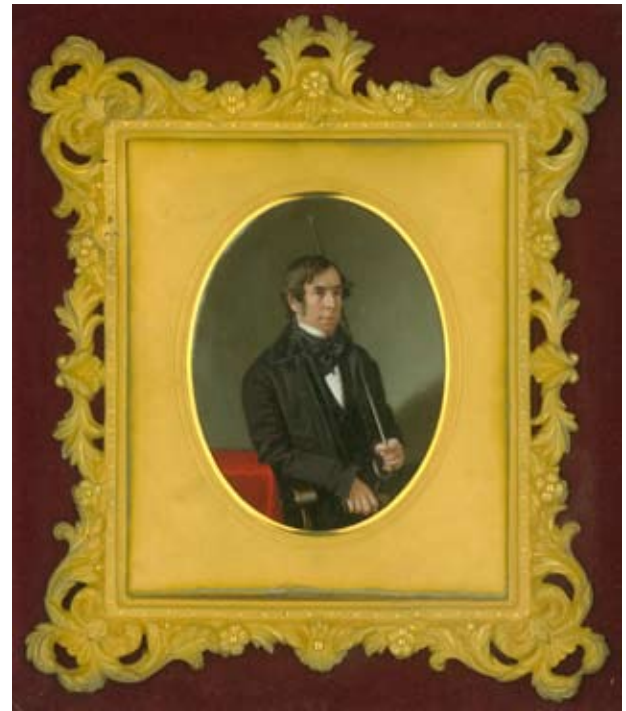
The Athenaeum has nationally significant holdings in architecture and trade materials and we are particularly pleased when these two areas coincide. One such instance is the advertising brochure produced by real estate developer Walter Bassett Smith for Wynnewood Manor. (See cover) Smith hired first-rate architects, including Horace Trumbauer, Heacock & Hokanson & Watson & Huckel, to design the homes in his development that had all the "conveniences of the city" and the "advantages of the country." This foldout, produced about 1910, features both photographs of new residences and color renderings. "\$10,000 for a

house and ground... only the best .. Now is the time to buy!"

## Objects

The single heaviest gift this year was the concrete and glazed terra cotta medallion from the T-Square Club headquarters. This piece was designed by architects Wilson Eyre, Jr. and John McIlvaine and manufactured by the Enfield Pottery Works. Rescued from demolition crews over 30 years ago, the several-hundred-pound piece was installed in the Athenaeum stair hall in 2000 and officially donated last year by Hyman Myers, FAIA, in honor of his wife, Sandra K. Myers.

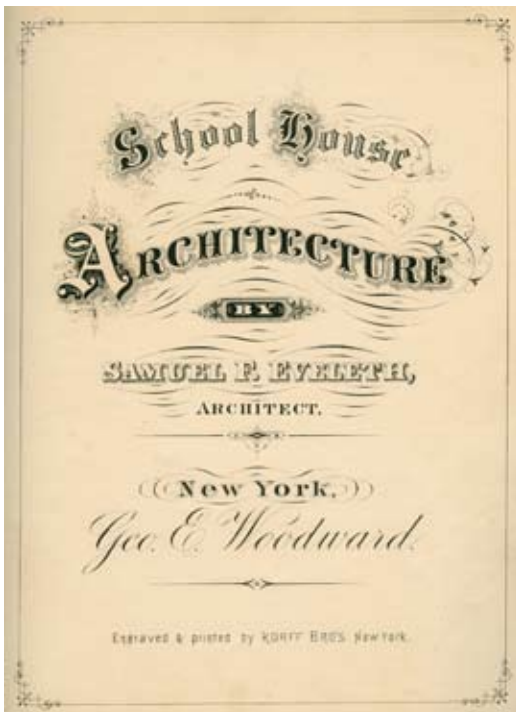
John Rodman Paul donated a lovely miniature oval oil portrait of Comegys Paul (1785-1851), an early shareholder of the Athenaeum. Also acquired was Comegys Paul's share certificate (#364) dated 1820.



Above: Portrait of Comegys Paul.  
Gift of John Rodman Paul.

## Books

Athenaeum shareholder Robert Raley added two items to his substantial collection here including Samuel F. Eveleth's *School House Architecture*, published in 1870 by George E. Woodward.



Above: Title page from *School House Architecture*.  
Right: Design No. 1 from *School House Architecture*. Gift of Robert Raley.

## Prints

Our Masonic collections were further bolstered this year by the gift of Nancy Williams of an 1855 Max Rosenthal chromo-lithograph of the interior of the new Masonic Hall. Collins & Autenrieth prepared the original interior rendering of this design by architects Sloan & Stewart. This was the third and final lodge at this location on the north side of Chestnut Street, between 7th and 8th streets. The Masonic Temple on Broad Street replaced this building in 1873.





Above: T-Square Club Medallion. Gift of Hyman Myers, FAIA in honor of Sandra K. Myers.  
Below: Masonic Hall. Max Rosenthal after Collins & Autenrieth, 1855. Gift of Nancy Williams.



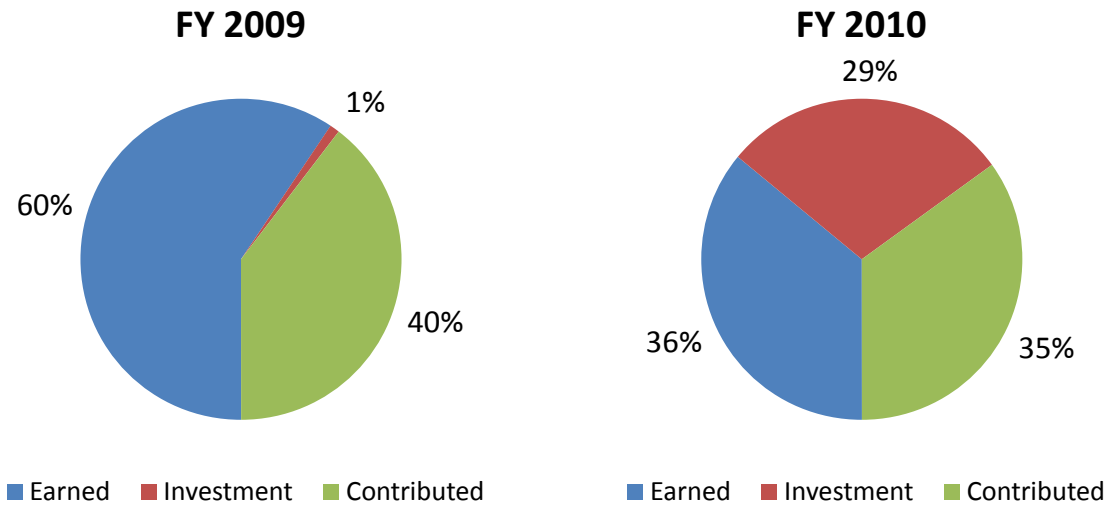
# THE ATHENAEUM OF PHILADELPHIA

## STATEMENTS OF OPERATING REVENUES AND EXPENSES

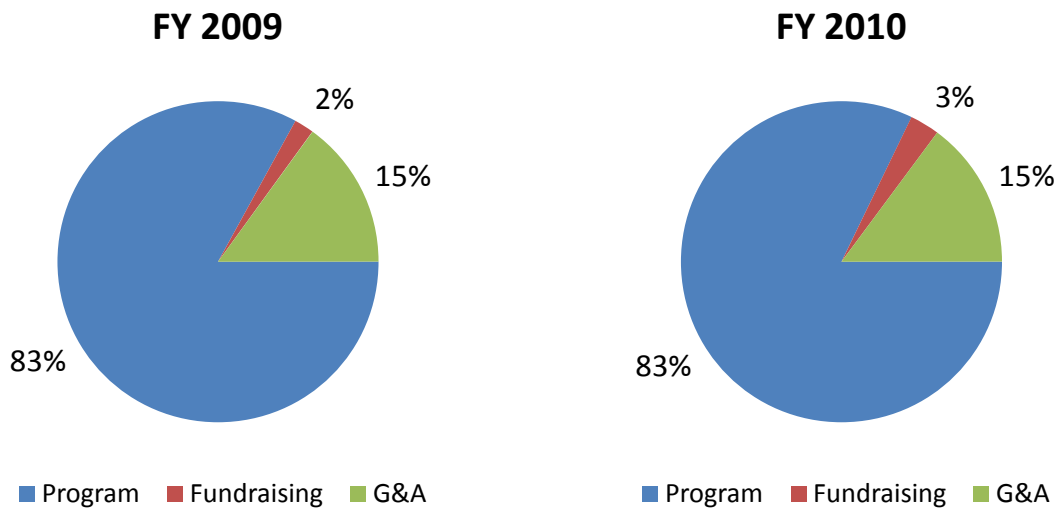
Years ended June 30, 2010 and 2009

	<u>2010</u>	<u>2009</u>
<b>Revenues and Other Support</b>		
Member dues	\$ 156,100	\$ 147,493
New memberships	20,000	22,000
Endowment income designated for current operations	302,991	271,130
Other investment income	16,972	9,180
Income from dedicated trust	158,384	255,881
Programs		
Members	14,940	5,260
Contributions	230,649	271,067
Outside services	48,139	123,076
Miscellaneous income	50,649	49,883
Sales of publications	4,488	4,875
	<u>1,003,312</u>	<u>1,159,845</u>
<b>Net assets released from restrictions</b>	<u>91,491</u>	<u>137,123</u>
<b>Total revenues and other support</b>	<u>1,094,803</u>	<u>1,296,968</u>
<b>Expenses</b>		
Programs – exhibitions and lectures	62,190	53,647
Salaries	468,450	466,354
Payroll taxes	37,740	37,608
Employees' medical insurance	87,456	81,018
Employee retirement benefit	27,879	27,469
Collection and acquisition	53,958	53,907
Research fellowships and awards	23,808	29,323
Printing	2,987	3,977
Outside services	46,734	82,882
Utilities	63,939	71,624
Building maintenance and service contracts	52,157	36,561
Insurance	33,699	31,549
Legal and accounting	18,554	15,428
Office	28,918	28,791
Collection storage off-site	39,535	37,536
Professional society dues	3,265	4,290
Miscellaneous	16,413	26,088
Conservation of collections	23,322	62,309
<b>Total expenses</b>	<u>1,091,004</u>	<u>1,150,361</u>
<b>Excess of operating revenue over expenses before depreciation</b>	3,799	146,607
<b>Non-Cash Charges/Other Changes</b>		
Depreciation expense	(131,259)	(126,544)
Other transfers	<u>-</u>	<u>-</u>
<b>Excess (deficit) of operating revenue over expenses</b>	<u>\$ (127,460)</u>	<u>\$ 20,063</u>

## Revenue



## Expenses



# NAMED BOOK FUNDS & ENDOWMENTS

Roland Taylor Addis Book Fund  
Edward Lee Altemus Book Fund  
Architectural Advisory Committee Endowment  
Architecture Acquisitions Fund  
Arronson Foundation Conservation Fund  
Thomas G. Ashjean III Book Fund  
Graham Gaylord Ashmead Book Fund  
Clare Austin Baird Book Fund  
Barra Foundation Symposium Fund  
Isaac Barton Fund  
Arnold A. Bayard Fund  
Alice Beardwood Book Fund  
Alice Beardwood Lecture Fund  
Emma Beerman Book Fund  
Hannah G. Brody Fund  
Gladys Brooks Fund  
Richard Bull Fund  
Struthers and Katherine Newlin Burt Book Fund  
Henry Paul Busch Book Fund  
Claneil Foundation Conservation Fund  
Benjamin Coates Memorial Fund  
Arthur G. Coffin Fund  
Elliott Cresson Fund  
John M. Dickey Book Fund  
Samuel J. Dornsife Book Fund  
Franklin and Helen Eden Book Fund  
Annette Harsipe Emgarth Book Fund  
Armand G. Erpf Book Fund  
Thomas Clifton Etter Book Fund  
Guy and Joanne Garrison Book Fund  
Helen H. Gemmill and Kenneth W. Gemmill Book Fund  
Francis R. and Jean L. Grebe Lecture Fund  
Eleanor R. Green Book Fund  
Albert M. Greenfield Memorial Book Fund  
F. Otto & Dorothy W. Haas Fund  
John Otto Haas Book Fund  
Thomas Bailey Hagen Book Fund  
Edith Ogden Harrison Lecture Fund  
Richard Hubbard Howland Book Fund  
Constance A. Jones Book Fund  
Arthur M. Kennedy Memorial Fund  
Fenton Keyes Memorial Book Fund  
Perot Lardner Fund  
Eleanor Bird Light Operations Fund  
Eleanor Bird Light Decorative Arts Conservation Fund  
John Livezey Book Fund  
David R. Longhi Book Fund  
H.J. Magaziner Annuity Fund  
Stephen Walter Mason, Jr. Conservation Fund  
Stephen Craig McCormick Book Fund  
Jane D. Rupp McPherson Book Fund  
Anna C., May C. and Walter J. Miller Book Fund  
Roger W. Moss Book Fund  
Roger W. Moss Fund for Staff Salaries  
Roger W. Moss Symposium Fund  
H.S. Prentiss Nichols Book Fund  
James F. O’Gorman Book Fund  
Charles Perot Fund  
Edward Perot Fund  
Charles E. Peterson Fellowship Fund  
Charles E. Peterson H.A.B.S. Prize Fund  
Beryl and Rosemond C. Price Conservation Fund  
Emilie K. and Robert S. Price Conservation Fund  
Robert L. Raley Book Fund  
Lewis M. Robbins Book Fund  
Ellen L. Rose Book Fund  
Helen T. Rosenlund Memorial Book Fund  
Ralph M. Sargent Memorial Book Fund  
John Savage Fund  
William L. Schaffer Book Fund  
Mona Fisher Schneidman Book Fund  
Florance Jenkins Scott Book Fund  
Jacob L. Sharpe Fund  
Shober Family Book Fund  
Robert C. Smith Conservation Fund  
Mary Waidner Snow Garden Fund  
Walter Stait Book Fund  
Charles Wharton Stork Lecture Fund  
William Strickland Lecture Fund  
Elizabeth P. Van Pelt Fund  
George Vaux Fund  
Edna and Charles Weiner Book Fund  
Francis Macomb Wetherill Fund  
Barry F. Wiksten Book Fund  
Barry F. Wiksten Building Fund  
Emily W. and Franklin H. Williams Conservation Fund  
Moses A. and Mollie Zebooker Memorial Book Fund

# DONORS

## Gifts and In-Kind Donations (July 1, 2009 - June 30, 2010)

25th Century Foundation  
Mr. Stanley E. Abelson  
Robert I. Abramowitz, Esq.  
Mr. Joseph L. Abriola, Jr.  
Mr. Joseph L. Abriola  
Ms. Jean Shaw Adelman  
Mr. John Allen Affleck  
Mr. George M. Ahrens  
Mr. John W. Alexander, Jr.  
Mr. Philip Alperson  
Mrs. Eleanor W. Altemus  
Mr. Nicholas Ward Altemus  
Miss Elizabeth Ann Anderson  
Mrs. Betty April  
Mr. Pierce Archer  
Institute for Classical Architecture  
and Classical America  
Mrs. James S. Armentrout, Jr.  
Mrs. John F. Arndt, Jr.  
Louis Michael Ascher, Ph.D.  
Mr. John L. Asher, Jr.  
Assoc. for Preservation Technology  
Ms. Jacqueline H. Bagley  
Ms. Eileen M. Baird  
Donna E. Baker, Esq.  
Mr. James M. Ballengee, Jr.  
Mrs. Charles Bangert, Jr.  
Ms. Bridget D. Baratta  
Mr. Peter D. Barberie  
Barra Foundation, Inc.  
The Honorable Harvey Bartle, III  
Mr. Robert S. Bass  
Estate of George Batcheler  
Mr. Gerald H. Batten  
Mr. David L. Bauman  
Mrs. Joseph T. Beardwood, III  
Mrs. Alexander G. Bearn  
Mrs. Flora L. Becker  
Mr. Mark Bedwell  
Ms. Susan R. Behr  
Beneficia Foundation  
The Beneficial Foundation  
Ms. Elizabeth Lucinda Bennett  
Ms. Georgia C. Bennett  
Mr. D. Jeffry Benoliel  
Mr. Peter A. Benoliel  
Mrs. Helen Bershad  
Mr. James C. Biddle  
Mr. Nicholas Biddle, Jr.  
Mrs. Suzanne H. Binswanger  
Mrs. Harry C. Bishop  
Mr. Rolin P. Bissell  
Frederick L. Bissinger, Jr., AIA  
Ms. Joan Stroud Blaine  
John W. Blatteau, AIA  
Ms. Amy A. Bluemle  
Mr. Paul T. Bockenbauer  
Mrs. James F. Bodine  
Mr. James F. Bogrette, AIA  
Kiki Bolender, AIA  
Mr. Eugene A. Bolt, Jr.  
Ms. Cheryl A. Bombeck  
Mr. Edward T. Borer  
Miss Edith F. Borie  
Boston Foundation  
Miss Audrey Ann Bostwick  
Brendan P. Bovaird, Esq.  
John R. Bowie, AIA  
Mr. Dennis J. Boylan  
Mr. H. William Brady  
Luther W. Brady, Jr., M.D.  
Richard A. Brand, M.D.  
Mr. John A. Bremner  
Ms. Bonnie S. Brier  
Mr. John M. Briggs  
Mr. George R. Brodie, Jr.  
Mr. William Brodsky  
Mr. William D. Brookover  
Catharine Barnett Brown  
Dr. Fraser H. Brown  
Mr. Stanhope S. Browne  
Mr. Walter W. Buckley, Jr.  
Mr. Carter R. Buller  
Mr. Brian C. Burke  
Mr. G. Theodore Burkett  
Charles H. Burnette, FAIA  
Ms. Janet Burnham  
The Honorable Ann M. Butchart  
Mr. Howard Butcher, IV  
Mrs. Perry G. Caimi  
Mr. Alexander Grant Calder  
Ms. Philippa H. Campbell  
Mr. Ross L. Campbell  
Campbell Thomas & Co. and  
Toll Brothers, Inc.  
Mr. John G. Carr  
Ms. Cara Carroccia  
Mr. Thomas E. Carroll  
Mr. James Tyson Carson  
Mrs. Cummins Catherwood, Jr.  
Mrs. John R. Caulk, III  
Mrs. Elizabeth M. Cecil  
Mr. William H. Chandler, III  
Alfred D. Chandler, III  
Mrs. Scott J. Childress  
Ms. Margaret Chisholm  
Mr. Morris A. Chomitz  
Mr. Per W. Christensen  
Denise DeLaurentis Cilio  
Carl T. Clark, EAIA  
Ms. Caroline C. Clark  
Mrs. James Clark  
Ms. Anne Clattenburg  
Mr. Theodore Clattenburg, Jr.  
Mr. Richard D. Claypool  
Mr. H. Bernard Cleff  
Mrs. Benjamin Coates  
Mr. Donald R. Cochran, Jr.  
Ms. Trudy Lee Cohen  
Mr. John R. Collett  
Mr. Robert L. Collings  
Mr. Gordon S. Converse  
Professor Patricia Conway  
Mr. Peter F. Cooke  
David Y. Cooper, M.D.  
Mr. Frank G. Cooper  
Mr. Carl Cordek  
Mr. J. William Cornell  
Ms. Patricia Richards Cosgrave  
Mrs. Edward W. Coslett, Jr.  
Mrs. Fredericka E. Courpas  
Mr. Edwin D. Coyle  
Mr. James D. Crawford  
Mr. Peter S. Cressman  
Dr. Donald H. Cresswell

## Donors

Mr. James L. Crowell  
Mr. Charles O. Culver  
Mr. Rudy E. D'Alessandro  
The Honorable Stewart Dalzell  
Mr. Davis d'Ambly  
Mr. L. Daniel Dannenbaum  
Ms. Joan D'Antonio  
Mr. Charles J. Davidson  
Mrs. Harold M. Davis  
Mr. William M. Davison, 4th  
Professor David G. De Long  
Mr. Morris J. Dean  
Mr. Patrick Dean  
Mr. Matthew J. DeJulio, Jr.  
Mr. Michael R. DeLuca  
The Honorable Pamela P. Dembe  
Mr. Robert W. Denious  
Mrs. Raymond K. Denworth, Jr.  
Miss Maude T.M. deSchauensee  
Mr. David R. DeVoe  
Leonardo Diaz, AIA  
Mr. H. Richard Dietrich, III  
Ms. Mary G. DiGirolamo  
Mrs. Willem K. Dikland  
Ms. Cheryl Dobleske  
Ms. Julie A. Dobson  
Mrs. David W. Doelp  
Mr. J. B. Doherty  
Ms. Sandy F. Dolnick  
F. Scott Donahue, Esq.  
Mr. Andrew Donaldson-Evans  
Mr. Kevin F. Donohoe  
Mrs. Thomas H. Doolan  
Mr. David M. Doret  
Mr. G. Morris Dorrance, Jr.  
Mr. William G. Dorsey  
Constantine G. Doukakis, P.E.  
Mrs. Phoebe A. Driscoll  
Mrs. Sonya D. Driscoll  
Ms. Margaret P. Duckett  
Mr. David Bruce Duncan  
Mr. Robert H. Dyson, Jr.  
Mr. J. Michael Dzuba  
Mr. Bernard L. Edelstein  
Eden Charitable Foundation  
Robert Edwards  
Alexander Ehrlich, M.D.  
Ellis Coffee Company  
Ms. Linda V. Ellsworth  
Ms. Ilona S. English  
Mr. Johnathan White Ericson  
Ms. M. L. Alexandra Escher  
Mr. Robert A. Esposito  
Mr. Leonard Evelev  
Ms. Jean M. Farnsworth  
Ms. Caroline W. Farr  
John A. Fatula, AIA  
Mrs. Harry Feldman

Mrs. William E. Fischelis  
David H. Fischer, M.D.  
Mr. J. Herbert Fithian  
Mrs. William Thomas Fleming, Jr.  
Michael O'S. Floyd, Esq.  
Mr. Robert T. Foley  
Ms. Helen H. Ford  
Philip Edward Franks, AIA  
Mr. Samuel M. Freeman, II  
Mrs. Stanley B. Frenze  
Mrs. Jack M. Friedland  
Mr. Jack Friedman  
Mrs. Richard H. Gabel  
Ms. Elizabeth L. Gagne  
Mr. Wm. Roderick Gagne  
Dr. Guy G. Garrison  
Mr. Robert N. Garrison  
Mr. John T. Garrity, Jr.  
Vincent F. Garrity, Jr., Esq.  
Ms. Elizabeth H. Gemmill  
Ms. Gay P. Gervin  
Mr. Nicholas L. Gianopulos  
Mr. William J. Gies, II  
Robert J. Gill, M.D.  
Mr. Dixon F. Gillis  
Ms. Deborah E. Glass  
Mr. Richard C. Glazer  
Mr. Peter Godfrey  
Mr. Stephen Goff  
A. Deborah Goldstein, M.D.  
Mrs. Gray C. Goodman  
Mrs. Kenneth H. Gordon, Jr.  
Thomas Hamilton Gouge, M.D.  
Mrs. B. David Grant  
Mr. Steven Alan Grasse  
Mrs. Carole Haas Gravagno  
Mr. David M. Gray  
Mr. Francis R. Grebe  
James Lowell Fales Green, Esq.  
Alan Jay Greenberger, FAIA  
Mrs. Robert Greiff  
Mr. Edward Grusheski  
Mr. Gene F. Guidi  
Mrs. Robert C. Gunning  
Mrs. Doris Gunther  
Mr. Chandrakant R. Gupta  
Ms. Nan R. Gutterman  
Charles Haas  
Mrs. Victoria S.B. Haas  
HABS Foundation  
Mr. Thomas B. Hagen  
Mrs. Elizabeth Haimes  
Ms. Merrill Dyshel Hakim  
Christopher R. Hall, AIA  
Mr. Michael P. Halpert  
Mr. Nathaniel P. Hamilton  
Mrs. Samuel M.V. Hamilton  
Mrs. William L. Hanaway, Jr.

Mr. Charles L. Hancock, Jr.  
Mr. Harry T. Hare  
Mr. John G. Harkins, Jr.  
Stephen J. Harmelin, Esq.  
Mr. William Harral, III  
Mr. Russell T. Harris, Jr.  
Mrs. William D. Harris  
Mr. Eric Mann Hart  
Mr. Henry G. Hart, Jr.  
Edmund L. Harvey, Jr., Esq.  
Gregory M. Harvey, Esq.  
Mrs. John Harvey  
Mr. Thomas Biddle Harvey  
Mrs. Christie W. Hastings  
Michael J. Haut, M.D.  
Mrs. William E. Hedges  
Mr. Bernard G. Heinzen  
Mr. J. Lawrence Heizmann  
Mr. Eric Beard Henson  
Mr. John H. Hepp, IV  
Mr. Harold D. Hershberger, Jr.  
Mrs. William D. Hershey  
Mr. William D. Hershey  
Mrs. Edward C. Hess  
Mr. Harry Edward Hill, III  
Mr. James Halpin Hill, Jr.  
Ms. Louise Lark Hill  
Mr. Charles Lewis Hillis, Jr.  
Mrs. Alan R. Hirsig  
Historic American Buildings  
Survey Foundation  
Alvin H. Holm, AIA  
Mr. Leo A. Holt  
Mr. Frederick P. Holzerman  
Mrs. Warren B. Hopkins  
Mr. John J. Hopkinson  
Dona W. Horowitz-Behrend, Ph.D.  
Mr. Joseph J. Horvath  
Mr. Lawrence O. Houston, Jr.  
Ms. Cynthia A. Hudson  
Richard W. Huffman, FAIA  
Mr. Francis J. Hughes  
Mrs. Dennis Hummel  
Mrs. John Frazier Hunt  
Mr. John Frazier Hunt  
Mr. Richard W. Hurd  
Neil Hurowitz, Esq.  
Mr. Thomas M. Hyndman, Jr.  
Mr. L. Stockton Illoway  
Mr. Andrew Wood Ingersoll  
Mr. William B. Irvine, III  
Mr. Jordan L. Irving  
Ms. Alix Rockwell Jacobs  
Mr. William Warner Jeanes, Jr.  
Mr. Torben P. Jenk  
Mr. Scott M. Jenkins  
Dr. Ejner J. Jensen  
Mrs. Joan M. Johnson



## Donors

Mr. Arthur W. Jones  
Mr. James H. Jones  
Edward J. Kaier, Esq.  
Mr. Jerome Kaplan  
Mr. Leroy E. Kean  
Charles P. Keates, Esq.  
Daniel O. Kelley, AIA  
Christopher D. Kenney, AIA  
Mr. Gilbert Kerlin  
Michael A. Kihn, AIA  
Mrs. Harvey Kimmel  
Charles (Chick) King, EAIA  
James Nelson Kise, AIA  
Mrs. Janet S. Klein  
Mrs. Louis Klein  
Mrs. Morton M. Kligerman  
Mr. George F. Koch, Jr.  
F. Peter Kohler, M.D.  
Mr. Joseph K. Koplín  
Mr. Berton E. Korman  
Kraft Foods Foundation  
Darrell L. Kratzer, AIA  
Mrs. C. Scott Kulicke  
Peter R. Laibson, M.D.  
Ms. Shirley E. Laird  
Ms. Bette E. Landman  
Marc S. Lapayowker, M.D.  
Mr. Michael D. LaRue  
Mr. Mark Samuels Lasner  
Mr. Charles Latham, Jr.  
Mrs. Deborah B. Latta  
Bertram Laudenslager, ASID  
Mr. Frederick J.M. LaValley  
Ms. Carole N. Le Faivre-Rochester  
Ms. Susan G. Lea  
Mr. John Y. LeBourgeois  
Mrs. Gabriele W. Lee  
Mr. Robert Harris Lee, Jr.  
Mrs. Ilene Lefko  
Mrs. E.B. Leisenring, Jr.  
Mr. H.F. Lenfest  
Mrs. Howard H. Lewis  
Edward Davis Lewis  
Mr. Theodore H. Lewis  
Ms. Michelle Liao  
Mr. Robert E. Linck  
Edmond L. Lincoln  
H. Mather Lippincott, Jr., EFAIA  
Ms. Karen LiPuma  
Cynthia J. Little, Ph.D.  
Eva G. Loeb, M.D.  
Mr. Peter S. Longstreth  
Mrs. Joseph S. Lord, III  
The Lord's New Church which  
    is Nova Hiersolyma  
Lisa D. Love, Esq.  
Mrs. Barbara B. Lunden  
Ms. Nancy L. Machinist  
William J. MacMurtrie, Jr., M.D.  
Cameron J. Mactavish, AIA  
Henry J. Magaziner, EFAIA  
Mrs. Francis R. Manlove  
Mr. Brian E. Mann  
Carl M. Mansfield, M.D.  
Mr. Alvan Markle, IV  
Benjamin Martin, AIA  
Gregory S. Maslow, M.D.  
Mr. Charles E. Mather, III  
Mrs. Robert Worrell Mather  
Mr. David W. Maxey  
Mr. Robert M. Maxwell  
Ms. Katharine Vaux McCauley  
Mr. Peter McCausland  
Mr. John F. McCloskey, Jr.  
Mr. Stephen J. McConnell  
Mr. Terrence M. McDermott  
Miss Margaret M. McDonough  
Mr. John H. McFadden  
Mrs. Claudia G. McGill  
Ms. Dagmar E. McGill  
James F. McGillin, AIA  
Mrs. Sam S. McKeel  
Ms. Marthe T. McKinnon  
Mr. Bruce McKittrick  
Mrs. Collin F. McNeil  
Ms. Mary Patterson McPherson  
Mr. John J. Medveckis  
Mr. Lawrence F. Meehan  
Diane Meleski  
Mr. Leonard Mellman  
John L. Melvin, M.D.  
Mr. Stanley Merves  
The Reverend John E. Midwood, Jr.  
Mrs. David T. Miller  
Mrs. John A. Miller  
Mr. Jonathan W. Miller  
Ms. Madeline E. Miller  
Mrs. Arthur Milner  
Mr. C. George Milner  
John D. Milner, FAIA  
Mrs. Marlene F. Milner  
Mr. Handsel B. Minyard  
Mr. Eric E. Mitchell  
Barbara J. Mitnick, Ph.D.  
Mr. Allen John Model  
Mrs. Edward A. Montgomery, Jr.  
Mr. C.J. Moore  
Mrs. Constance C. Moore  
Moorestown Community House  
Andrew Craig Morrison, AIA  
William Morrison  
Dr. Roger W. Moss  
Mr. Charles G. Muir  
Mr. Stephen P. Mullin  
Ms. Christine A. Mumm  
Herminio Muniz, M.D.  
Mrs. Raymond J. Munsch  
Mr. Albert B. Murphy, III  
Mr. Edward F. Murphy  
Ms. Heather Murphy  
Hyman and Sandra Myers, FAIA  
Ms. Nancy H. Nance  
Mrs. Harriet S. Nash  
National Endowment for Humanities  
National Park Service  
Mark W. Nester, D.M.D.  
Ms. Jeanette Lerman-Neubauer  
Mr. Arthur E. Newbold, IV  
Charles Warren Nichols, M.D.  
Mr. Scott O'Barr, AIA  
John Carl Oberholtzer, M.D.  
Mr. Joseph A. O'Connor, Jr.  
Ms. Jean Baer O'Gorman  
Mr. William Francis O'Keefe, Jr.  
Mrs. Barbara Oldenhoff  
Mrs. A. Douglas Oliver  
Mr. Shaun F. O'Malley  
PA Historical & Museum Commission  
Mrs. Douglas Pappajohn  
Lawrence Charles Parish, M.D.  
Mr. John N. Park, Jr.  
Ms. Ruth A. Parker  
Satoko I. Parker, Ph.D.  
The Reverend Richard O. Partington  
Mrs. Linda Scribner Paskin  
John Rodman Paul  
Mrs. Melba Pearlstein  
William Penn Foundation  
Mr. William H. Pentz  
Mr. Myles Standish Pettengill, Jr.  
Pew Center for Arts & Heritage  
The Philadelphia Contributionship  
Philadelphia Cultural Fund  
Philadelphia Fountain Society  
Mrs. John Pickering, II  
Mr. Paul E. Pickering  
Mr. David N. Pincus  
Thomas P. Piotrowski  
PNC Bank, N.A.  
Mr. John Praksta  
The Honorable Gene E.K. Pratter  
Philadelphia Society for Preservation  
    of Landmarks  
Mr. Robert S. Price  
Mr. Alfred C. Prime  
Mr. Edwin N. Probert, II  
The Prudential Foundation  
Ms. Helen P. Pudlin  
The Reverend J. Michael Pulsifer  
Mr. Jonathan Pyle  
Robert L. Raley, AIA  
Ken F. Raniere  
Harold A. Rashkis, M.D., PhD  
Mr. Pierre T. Ravacon

## Donors

Mr. Paul C. Reber  
Ms. Joan Curtis Reese  
Robert D. Reinecke, M.D.  
The Honorable Marjorie O. Rendell  
Mr. Edward O.F. Rhoads  
David J. Richards, M.D.  
Mr. William Burpee Richards  
Mr. Thomas M. Ridington  
Mr. Theodore Ryan Robb  
Mr. Donald H. Roberts, Jr.  
Mrs. Elizabeth D. S. Roberts  
Mr. Leonard H. Roberts  
Mr. Thomas B. Roberts  
Suzanne Root, Esq.  
Mr. Vincent A. Root  
The Reverend Terence C. Roper  
Ms. Ellen L. Rose  
Miss Dorothy Roseman  
Mr. Lewis C. Ross  
Mr. Dan H. Rothermel  
Mrs. Richard H. Rothman  
Mr. David B. Rowland  
Mr. Alan Rubin  
Mrs. Caroline Ware Rusten  
Marvin L. Sachs, M.D.  
Neil R. Sandvold, AIA  
Hugh A.A. Sargent, Esq.  
Mr. Charles C. Savage  
Mr. Henry L. Savage, Jr.  
Rachel Simmons Schade, AIA  
Mr. Edward E. Scharff  
Mr. Harry Carl Schaub  
Mrs. Peter B. Schiffer  
Guy Lacy Schless, M.D.  
Mr. John Schmiechen  
Mr. Matthew F. Schooley  
Mr. Buck Scott  
Scott Associates  
Denise Scott Brown, RIBA  
Mr. Peter A. Sears  
Ms. Jo Valerie Seibert  
Mr. David Seltzer  
Ms. Dianne L. Semingson  
Mr. Ronald E. Shaffer  
Mr. Neil H. Shah  
Mr. Geoffrey C. Shepard  
Mrs. Henry H. Sherk  
Henry H. Sherk, M.D.  
Mrs. Marciarose Shestak  
Mr. Murray A. Simmons  
Ms. Rebecca Pepper Sinkler  
Mrs. Nathan Sivin  
George C. Skarmeas, AIA  
Nancy Small  
Mr. A. Gilmore Smith, Jr.  
Gray Smith, AIA  
Mr. Robert M. Smith

Stanton N. Smullens, M.D.  
Mr. James Smyth, Jr.  
Mr. Charles Darwin Snelling  
Ms. Marjorie Preston Snelling  
Mr. Richard Wood Snowden  
Howard M. Snyder, III, M.D.  
Lawrence J. Solin, M.D.  
Mr. Arthur R.G. Solmssen, Jr.  
Mr. Daniel M. Sossaman, Sr.  
Mr. Karl Henry Spaeth  
Mr. Boyd Lee Spahr, III  
Mr. Bernard Spain  
Ms. Petra T. Stanev  
Mr. Joel Anthony Stark  
Mr. and Mrs. James Stratton  
Mr. R. Philip Steinberg  
Mark N. Steinberger, Esq.  
Mr. Randall F. Stellwag  
Mr. Constantine Stephano  
Mrs. Bernard Stern  
Mrs. Rebecca T. Stoloff  
James Bennett Straw, AIA  
Mr. Samuel A. Streit  
Mr. Samuel S. Stroud, Sr.  
Marie J. Stuart, M.D.  
Adrienne Snelling Sullivan  
Marilyn Symmes  
Mr. David M. Szewczyk  
Mrs. John J. Terry  
Mr. Alexis Ollier Thielens  
Ms. Donna Robertson Thomas  
Robert P. Thomas, AIA  
Mrs. Radclyffe F. Thompson  
Mrs. Joseph W. Tiberio  
Brian P. Tierney, Esq.  
John P.A. Todd, AIA  
Ms. Anna Coxé Toogood  
Mr. Jeffrey Totaro  
Mr. P. Coleman Townsend, Jr.  
Mrs. David S. Traub  
Mr. Peter J. Travers  
Mr. David M. Trebing  
Peter J. Tucci, Esq.  
Mr. John C. Tuten, Jr.  
Mrs. Elizabeth P. Ueland  
The Reverend Richard L. Ullman  
Mr. Michael J. Valente  
Ms. Stephanie Valentine  
Mr. James L. Van Alen, Jr.  
Mrs. Gerrit P. Van de Bovenkamp  
Mr. Charles F. Van Doren  
Mrs. Nadeen R. Van Tuyle  
Mr. Walton Van Winkle, III  
Stephen Varenhorst, AIA  
Katherine Varone  
Robert Venturi, FAIA  
Mr. Douglas V. Verney

Ms. Sandra Barenbaum Vernick  
Mr. Michael E. Volpe  
Mrs. Peggy B. Wachs  
Ms. Laurie Wagman  
Thomas J. Wagner, Esq.  
Craig T. Wakefield, D.D.S.  
Mr. Richard M. Walker  
Mrs. Henry J. Walters  
Mr. Marshall J. Walthew  
Ms. Carol J. Ward  
Mr. James Bryce Warden  
Dr. Karol Wasylyshyn  
Penelope S. Watson, AIA  
Mrs. Thomas S. Weary  
Mrs. Christina T. Webber  
Mr. Edward A. Webber  
Ms. Mary Ellen Weber  
Ms. Donna Wechsler  
Mrs. Arleen C. Weinstein  
Mr. Fred Weinstein  
Joan K. Wells  
Susan West  
Mr. Barry F. Wiksten  
Mr. Barry S. Wildstein  
Nancy Williams  
Mr. Charles T. Wilmerding  
Dr. John Wilmerding  
Mr. Andrew M. Wilson  
Mr. C. Richard Wilson  
Gail Caskey Winkler, FASID  
Joseph A. Witkowski, M.D.  
Mrs. Jean K. Wolf  
Mrs. Charles R. Wood  
Moira D. Wood, M.D.  
Mr. David Nelson Wren  
Mr. David W. Wright  
Jeanne P. Wroblewski, Esq.  
Mr. Nicholas K. Wyman  
Alan Yuspeh, Esq.  
Mrs. Peter A. Zambelli  
Eli P. Zebooker, D.D.S.  
Peter H. Zimmerman, AIA

**JACOB STELMAN**  
 ARCHITECTURAL PHOTOGRAPHY  
 1896-1970

**ELLIS**  
 TEAS - COFFEES

THE ATHENAEUM OF PHILADELPHIA  
 Monday-Friday, 9am-5pm  
 August 31 - November 7, 2009  
 FREE ADMISSION

**TRADING UP**  
 SOME SURPRISING SAMPLES FROM THE  
 ATHENAEUM'S BUILDING TRADE COLLECTIONS

November 30, 2009 -  
 February 6, 2010

The Athenaeum of Philadelphia  
 Monday-Friday, 9-5  
 First Saturdays, 10-2

**PHILAGRAFIKA 2010**  
 PHILADELPHIA'S INTERNATIONAL ARCHITECTURAL PHOTOGRAPHY AND VIDEO CONTEST  
 INDEPENDENT PROJECTS

**BUILDING BY THE BOOK**  
 Book Artists Respond to Architecture & Design

The Athenaeum of Philadelphia  
 March 1 - May 1, 2010

Free Admission  
 Monday-Friday, 9-5  
 First Saturdays, 10-2

**AMERICAN PLACE**  
 The Historic American Buildings Survey at Seventy-Five Years

The Athenaeum of Philadelphia  
 May 21 - July 30, 2010

Monday-Friday: 9-5  
 Saturday, June 5th: 10-2